

FHD

UltraView

Professional and Versatile LED Monitor

UltraView FHD LED monitor series supports 1920 x 1080 resolution, achieving optimal picture quality. Improved energy efficiency and fan-around-the-clock operation.

F21"



F19"



F17"



F15"



F13"



UltraView FHD professional LED is more than just a standalone monitor. UltraView has a variety of embedded modules including HDMI Decoder, HDMI Extender, Multi-Monitor OSD Controller, SDI Input. The embedded modules give you the ability of video remote management and transmission for multiple monitors over network.

As a versatile FHD monitor, UltraView FHD professional LED is meticulously designed to meet professional and environmental demands including Sunlight readable brightness, Front protection, Anti-reflective/Vandal proof glass, DC power input, Brightness dimming and Mounting kit for VESA-mount, Panel-mount, Universal-mount, Desktop stand and Panel-mount.

With over 25 years' production experience, the UltraView structure is well-engineered and manufactured by our own CNC facilities and team of experts to ensure its ruggedness, mobility and quality, as well as being suitable for harsh environment applications. The structure can be customized if required to facilitate monitor installation. Our knowledgeable engineers are able to provide frame customization for specific dimensions, color, metal treatment, screen printing, bezel and mounting.

Product Highlights



Key Benefits

- ▶ 1920 x 1080 native FHD resolution
- ▶ F21", F19" : 16.7 million colors
- ▶ F17", F15" & F13" : 16.7 million colors (8-bit)
- ▶ DVI-D / VGA video input
- ▶ DP / HDMI video input (option)
- ▶ Video decoding capability up to 1080p (option)
- ▶ Rugged structure ensures high mobility
- ▶ IP65 front protection (NAP series)
- ▶ Professional-use durability & around-the-clock operation
- ▶ 2-year standard warranty (upgradable up to 5 years)

Applications

- Broadcasting / Advertising
- Traffic control / Command center
- Directory / Ticket kiosk
- Surveillance system
- Vehicle mount display
- Bathroom TV

Options

- DC power
- Touchscreen
- IP65 front protection
- Custom chassis & mounting
- Sunlight readable panel (F21" ~ F15")
- HDMI decoder & extender
- HDMI quad display 1080p (F21")
- Multi monitor OSD control module
- 3G / HD / SD-SDI input module
- Auto dimming
- Manual dimming

F21" ~ F13"

Professional and Versatile LED Monitor

UltraView

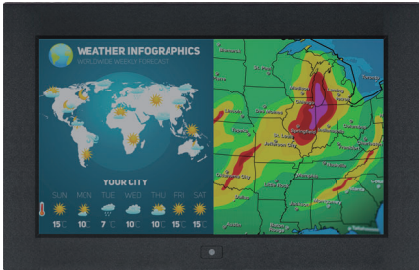
Standard Brightness

6mm aluminum front bezel



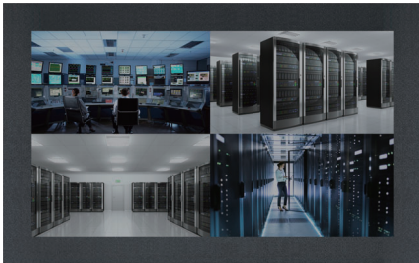
**AP-F21
AP-F19
AP-F17
AP-F15
AP-F13**

6mm aluminum front bezel
NEMA 4 / IP65 front protection



**NAP-F21
NAP-F19
NAP-F17
NAP-F15
NAP-F13**

Aluminum front cover



**DP-F21
DP-F19
DP-F17
DP-F15
DP-F13**

Universal open frame



**OP-F21
OP-F19
OP-F17
OP-F15
OP-F13**

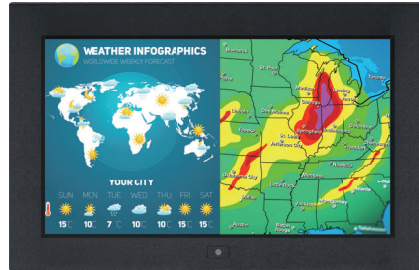
1000 cd/m² Sunlight Readable Brightness

6mm aluminum front bezel



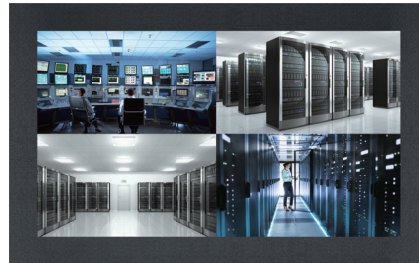
**HAP-F21
HAP-F19
HAP-F17
HAP-F15**

6mm aluminum front bezel
NEMA 4 / IP65 front protection



**NHAP-F21
NHAP-F19
NHAP-F17
NHAP-F15**

Aluminum front cover



**HDP-F21
HDP-F19
HDP-F17
HDP-F15**

Universal open frame



**HOP-F21
HOP-F19
HOP-F17
HOP-F15**

Chassis customization

- ▶ Dimension
- ▶ Color & Treatment
- ▶ Screen Printing
- ▶ Stainless Steel Bezel

Options — Touchscreen & Glass Protection

| Touchscreen type | F21 | F19 | F17 | F15 | F13 |
|-------------------------------|-----|-----|-----|-----|-----|
| Projected Capacitive 10-point | ✓ | ✓ | ✓ | ✓ | ✓ |
| e-Capacitive 1-point | ✓ | | | | |
| e-Resistive 1-point | ✓ | ✓ | ✓ | ✓ | ✓ |
| Infrared 6-point | | | | | |
| Anti-reflective Glass | | | ✓ | | |
| Vandal Proof Glass | | | ✓ | | |

Specification : Projected Capacitive 10-point Touch

| | TPC-10 Multi-touch |
|----------------------|---|
| Technology | Projected Capacitive |
| Touch Point | 10 point touch standard (special requirement available) |
| Input Type | Finger or Capacitive Stylus |
| Resolution | 4096 x 4096 |
| Touch Point Accuracy | ± 2 mm |
| Response Speed | < 5 ms |
| Activation Force | < 5 g |
| Surface Hardness | 6H |
| Light Transmission | > 85% |
| Haze | 3% ↓ |
| Durability | 50 million touches |
| Top Layer | 1.1 mm Glass |
| Bottom Layer | 0.7 mm Sensor Glass |
| Thickness | 2 mm |
| Connector | USB |
| Compatibility | Windows / Linux / Android / Mac |

Part no. : TPC10

Specification : e-Resistive 1-point Touch

| | TRB e-Resistive |
|--------------------|------------------------------|
| Technology | 5-Wire Resistive |
| Touch Point | Single |
| Input Type | Finger or Stylus |
| Resolution | 2048 x 2048 |
| Response Speed | 15 ms |
| Activation Force | ≤ 50 g |
| Surface Hardness | 3H |
| Light Transmission | 80% ± 3% |
| Haze | 8% ± 3% |
| Durability | 10 million touches |
| Top Layer | ITO Film |
| Bottom Layer | ITO Glass |
| Thickness | 3.2 ± 0.2 mm |
| Connector | USB Type A |
| Compatibility | Windows 7 / XP / Linux / Mac |

Part no. : TRB

Specification : e-Capacitive 1-point Touch

| | TCB e-Capacitive |
|--------------------|------------------------------|
| Technology | Capacitive |
| Touch Point | Single |
| Input Type | Finger |
| Resolution | 2048 x 2048 |
| Response Speed | 20 ms |
| Activation Force | ≤ 50 g |
| Surface Hardness | 9H |
| Light Transmission | 92% ± 2% |
| Haze | 7% |
| Durability | 300 million touches |
| Top / Bottom Layer | Glass |
| Thickness | 2.8 mm ± 10% |
| Connector | USB Type A |
| Compatibility | Windows 7 / XP / Linux / Mac |

Part no. : TCB

Options — DC Power

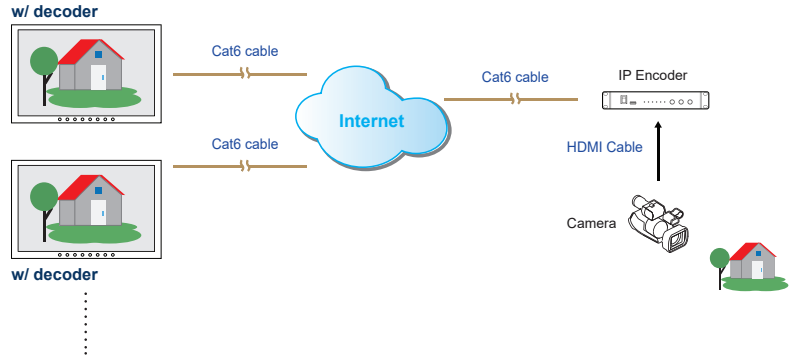
| | | 12V | 24V | 48V | 125V |
|---------------|----------------|---------|----------|----------|-----------|
| Input rating | Input voltage | 12-Volt | 24-Volt | 48-Volt | 110-Volt |
| | Input range | 9 ~ 18V | 18 ~ 36V | 36 ~ 75V | 66 ~ 160V |
| Input current | No load | 50 mA | 50 mA | 50 mA | 35 mA |
| | Full load | 4950 mA | 2450 mA | 1220 mA | 749 mA |
| Output rating | Output voltage | 12-Volt | 12-Volt | 12-Volt | 12-Volt |
| | Output current | 4.16A | 4.16A | 4.16A | 6.25A |
| Efficiency | | 84% | 85% | 85% | 91% |

Part no. : 12VDC
24VDC
48VDC
125VDC

Options — Video Management & Transmission over Network

Embedded HDMI Decoder Module 1080p over IP

- Decodes RTSP, RTMP, UDP, HTTP, HLS protocols
- Supports video resolutions up to 1080p / 60Hz
- Unicast and multicast support
- Operates on standard 1000Mb Ethernet networks
- Built-in Web UI for configuration and control
- Excellent image quality with very low delay

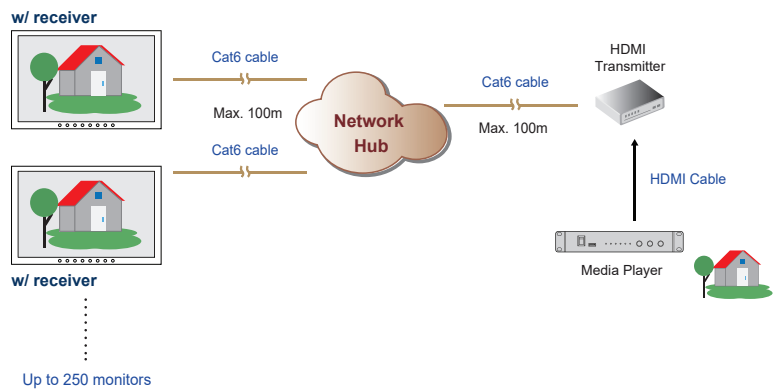


Part no.

Embedded HDMI Decoder Module : **UV-DE100F**
 Standalone HDMI Encoder : **UV-EN100F**

Embedded HDMI Receiver Module 1080p

- Extends the HDMI signal over a single Cat5/6 cable
- Supports video resolutions up to 1080p / 60Hz
- One to one just via Cat5/6 cable
- One to multi via network hub and Cat5/6 cable
- 100m maximum Cat5/6 cable distance
- Supports bi-directional IR communication
- High Speed HDMI 1.4 and HDCP 1.4 compliant
- No software or drivers required

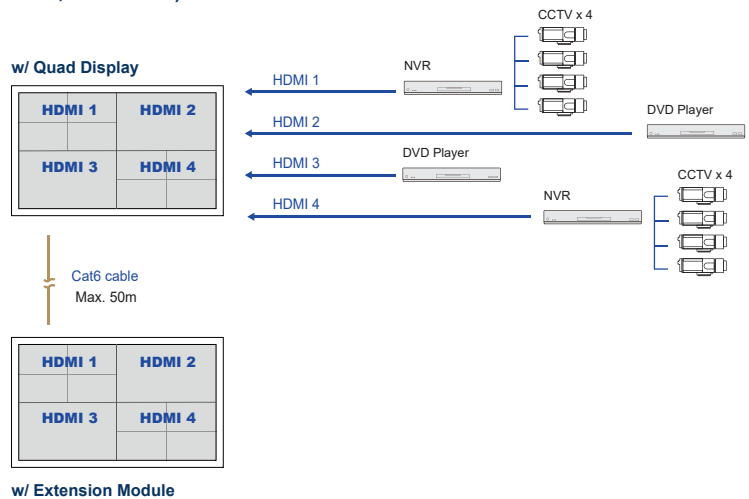


Part no.

Embedded HDMI Receiver Module : **UV-R100F**
 Standalone HDMI Transmitter : **UV-T100F**

Embedded HDMI Quad Display Module 1080p (For F23, F21 series)

- Allows 4 x HDMI inputs to be monitored simultaneously
- Quad split, panel left and full screen monitoring modes
- High speed HDMI 1.4 and HDCP 1.4 compliant
- Supports video resolutions up to 1080p / 60Hz
- Supports Scaler Up and Down function
- Control via local front panel and IR remote



Part no.

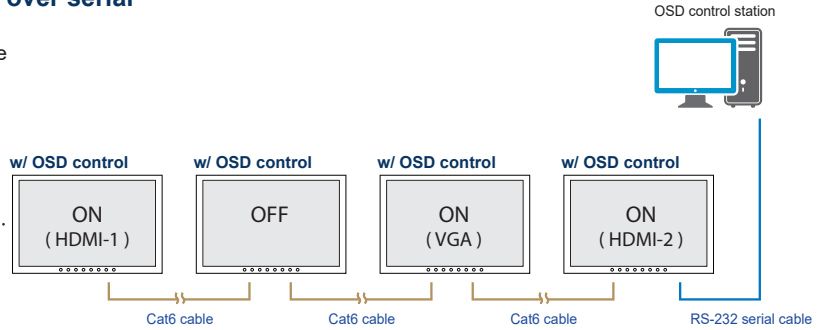
Embedded HDMI Quad Display Module : **QD-1080**
 Embedded Quad Display Extension Module : **QD-E1080**

Options — Video Management & Transmission over Network

Embedded Multi Monitor OSD Control Module over serial

- Remote control the monitor OSD via RS-232C serial interface
- Daisy chain up to 64 monitors via Cat5/6 cable
- Individual ID for individual monitor OSD settings
- Power ON or OFF monitor
- Adjust brightness & audio
- Switch video sources

Up to 64 monitors
Up to 1,000m distance



Part no.

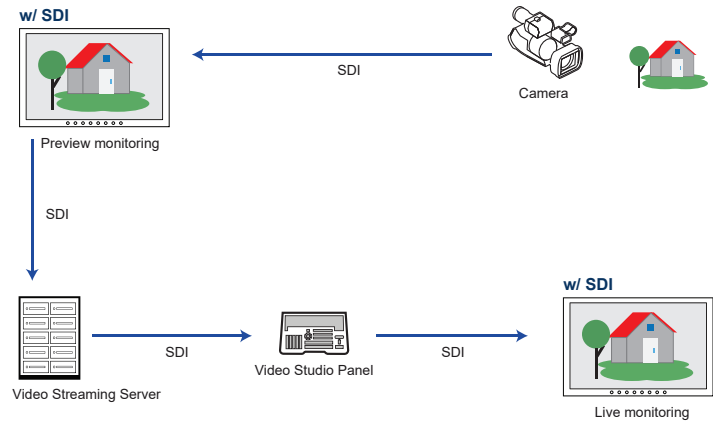
Embedded Multi Monitor OSD Control Module : **MCS**

Embedded 3G / HD / SD-SDI Input Module

- Intelligent SDI monitoring with broadcast quality scopes
- Supports multi-rate 3G / HD / SD-SDI format
- Provides input to output loop-through capability
- Auto format sensing & selection

Part no.

Embedded 3G / HD / SD-SDI Input Module : **SDI**

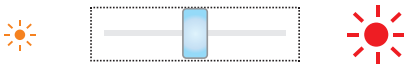


Embedded Auto Brightness Dimming Module

- Brightness changes according to its ambient brightness
- Its brightness change causes 10% increase or decrease

Part no.

Embedded Brightness Auto Dimming Module : **DA-01**



Embedded Manual Brightness Dimming Knob

- Easy-to-use IP54 dimming knob on the front panel
- One click causes 2% brightness increase or decrease
- Brightness adjustment from 0% to 100%

Part no.

Brightness Dimming Knob : **DS-01**

Product Specifications

| LCD Panel | F21 | H-F21 | F19 | H-F19 | F17 | H-F17 | F15 | H-F15 | F13 |
|---------------------------------|------------------------|---------------------|--------------------------|---------------------|--------------------------|---------------------|-------------------|---------------------|-------------------|
| Panel size (diagonal) | 21.5" | | 18.5" | | 17.3" | | 15.6" | | 13" |
| Native resolution | 1920 x 1080 | | | | | | | | |
| Brightness (cd/m ²) | 250 | 1000 ^{***} | 350 | 1000 ^{***} | 300 | 1000 ^{***} | 300 | 1000 ^{***} | 300 |
| Contrast ratio (typ.) | 1000 : 1 | 5000 : 1 | 1000 : 1 | 1000 : 1 | 1000 : 1 | 600 : 1 | 700 : 1 | 500 : 1 | 800 : 1 |
| Colors | 16.7 M | | 16.7 M | | 16.7 M, 8-bit | 16.7 M, 6-bit | 16.7 M, 8-bit | 16.7 M, 6-bit | 16.7 M, 8-bit |
| Viewing angle (L/R/U/D) | 85/85/80/80 | | 89/89/89/89 | | 85/85/85/85 | 80/80/60/80 | 89/89/89/89 | 70/70/60/60 | 85/85/85/85 |
| Response time (ms) | 5 | | 20 | | 25 | 40 | 30 | 8 | 25 |
| Dot pitch (mm) | 0.248 | | 0.213 | | 0.1989 | | 0.2988 | 0.17925 | 0.1529 |
| Display area (mm) | 476.64H x 268.11V | | 408.96H x 230.04V | | 381.888H x 214.812V | | 344.22H x 193.62V | 344.16H x 193.59V | 293.76H x 165.24V |
| Surface treatment | Haze 25%, Hard-coating | Anti-glare | Anti-glare, Hard-coating | | Anti-glare, Hard-coating | Hard-coating | Anti-glare | | Anti-glare |
| Surface hardness | 3H | | | | | | | | |
| Backlight type | LED | | | | | | | | |
| MTBF (hrs) | 30,000 | 50,000 | 50,000 | | 15,000 | 50,000 | 15,000 | 50,000 | 15,000 |

| Mounting | F21 | H-F21 | F19 | H-F19 | F17 | H-F17 | F15 | H-F15 | F13 |
|--------------------------|---------------|-------|---------------|-------|---------------|-------|---------------|-------|---------------|
| VESA mount (bundle) | 100 x 100 mm | | 100 x 100 mm | | 100 x 100 mm | | 100 x 100 mm | | 100 x 100 mm |
| Universal mount (ready) | OP only | | OP only | | OP only | | OP only | | OP only |
| Desktop stand (optional) | AP / NAP / DP | | AP / NAP / DP | | AP / NAP / DP | | AP / NAP / DP | | AP / NAP / DP |
| Panel mount (optional) | AP / NAP / DP | | AP / NAP / DP | | AP / NAP / DP | | AP / NAP / DP | | AP / NAP / DP |

| Power | F21 | H-F21 | F19 | H-F19 | F17 | H-F17 | F15 | H-F15 | F13 |
|--------------------|---------------------------------------|-------|-----|-------|-----|-------|-----|-------|-----|
| Input | Auto-sensing 100 to 240VAC, 50 / 60Hz | | | | | | | | |
| Max. Consumption : | | | | | | | | | |
| Screen on | 28W | 32W | 12W | 40W | 14W | 39W | 9W | 65W | 9W |
| Saving mode | 2W | | | | | | | | |
| Button off | 1W | | | | | | | | |

| Design | AP | NAP | DP | OP |
|-------------|-----------------|---------------|-------------|------------|
| Protection | 6mm front bezel | NEMA 4 / IP65 | Front cover | Open frame |
| Front panel | Black, RAL 9005 | | | - |
| Rear casing | Black, RAL 9005 | | | |

| Video | |
|-------|-------------------|
| VGA | Analog 0.7Vp-p |
| DVI | DVI-D single link |

| Video Option | |
|-----------------|---|
| Display port | DP1.0 / HDCP 1.3 |
| HDMI | HDMI 1.3 / HDCP 1.1 (for H-F17 only) HDMI 1.4 / HDCP 1.4 |
| Composite (BNC) | NTSC & PAL |

| Audio Option | |
|--------------------------|-------------------|
| Audio input : | |
| Connector | 3.5mm stereo jack |
| Impedance / Power level | 30kΩ / 750mV |
| Audio output : | |
| Connector | 3.5mm stereo jack |
| Resistance / Power level | 30kΩ / 2.8V |
| Speaker : | |
| Dual stereo speaker | 2W x 2 |

| DVI-D / VGA input |
|-----------------------------|
| PC signal : |
| 1920 x 1080 x 60Hz |
| 1360 x 768 x 60Hz |
| 1280 x 1024 x 60 / 75Hz |
| 1280 x 960 x 60Hz |
| 1280 x 768 x 60 / 75Hz |
| 1152 x 864 x 75Hz |
| 1024 x 768 x 60 / 70 / 75Hz |
| 848 x 480 x 60Hz |
| 800 x 600 x 60 / 72 / 75Hz |
| 720 x 400 x 70Hz |
| 640 x 480 x 60 / 72 / 75Hz |
| 640 x 400 x 70Hz |
| 640 x 350 x 70Hz |
| Audio signal : |
| 2ch Linear PCM |

| HDMI input |
|-------------------------|
| PC signal : |
| Same as VGA |
| HDMI 1.3 / 1.4 : |
| 1920 x 1080 x 50 / 60Hz |
| 1920 x 1080 x 25 / 30Hz |
| 1280 x 720 x 50 / 60Hz |
| 720 x 480 x 50 / 60Hz |
| Audio signal : |
| 2ch Linear PCM |

| Display port input |
|-----------------------------|
| PC signal : |
| 1920 x 1080 x 60Hz |
| 1600 x 1200 x 60Hz |
| 1360 x 768 x 60Hz |
| 1280 x 768 x 60 / 75Hz |
| 1280 x 768 x 60Hz |
| 1024 x 768 x 60 / 70 / 75Hz |
| 800 x 600 x 60 / 72 / 75Hz |
| 720 x 400 x 70Hz |
| 640 x 480 x 60 / 72 / 75Hz |
| Audio signal : |
| 2ch Linear PCM |

F13 & F17 resolution support not listed in the above table.
For details, please refer to the user manual.

F13 **F17**

* When the audio output is connected, speaker output is OFF

Product Specifications

| Environment | |
|------------------------|---|
| Operating temp. | 0 to 55°C degree *-20 to 70°C degree (F19,H-F19) |
| Storage temp. | -20 to 60°C degree *-20 to 70°C degree (F19,H-F19) |
| Operating humidity | 10~90%, non-condensing *5 to 95°C degree (F19,H-F19) |
| Storage humidity | 5 ~90%, non-condensing *5 to 95°C degree (F19,H-F19) |
| Operating altitude | 16,000 ft |
| Non-operating altitude | 40,000 ft |
| Shock | 10G acceleration (11ms duration) |
| Vibration | 10~300Hz 0.5G RMS random |

| Compliance | |
|-------------|----------------------|
| EMC | FCC & CE |
| Safety | CE / LVD & UKCA |
| Environment | REACH & RoHS3 / WEEE |

Physical Dimension & Weight

| F21" | | AP-F21 | NAP-F21 | DP-F21 | OP-F21 |
|-----------------------|------------|---|-------------------|---|---|
| Product (W x D x H) : | mm inch | 577.8 x 59.1 x 369.3 22.7 x 2.3 x 14.5 | | 546.8 x 56.4 x 338.3 21.5 x 2.2 x 13.3 | 574.8 x 52.6 x 366.3 22.6 x 2.1 x 14.4 |
| Net weight | | 9 kg / 19.8 lb | 9 kg / 19.8 lb | 7.9 kg / 17.4 lb | 6.7 kg / 14.7 lb |
| Packing (W x D x H) : | mm inch | 659 x 117 x 640 25.9 x 4.6 x 25.2 | | | |
| Gross weight | | 12.7 kg / 27.9 lb | 12.7 kg / 27.9 lb | 11.6 kg / 25.5 lb | 10.4 kg / 22.9 lb |

| F19" | | AP-F19 | NAP-F19 | DP-F19 | OP-F19 |
|-----------------------|------------|---|----------------|---|---|
| Product (W x D x H) : | mm inch | 508.5 x 65.6 x 318.1 20 x 2.6 x 12.5 | | 477.9 x 61.2 x 287.5 18.8 x 2.4 x 11.3 | 505 x 59.6 x 315.1 19.9 x 2.3 x 12.4 |
| Net weight | | 7 kg / 15.4 lb | 7 kg / 15.4 lb | 6.3 kg / 13.9 lb | 5.5 kg / 12.1 lb |
| Packing (W x D x H) : | mm inch | 662 x 115 x 533 26.1 x 4.5 x 21 | | | |
| Gross weight | | 10 kg / 22 lb | 10 kg / 22 lb | 9.2 kg / 20.2 lb | 8.4 kg / 18.5 lb |

| F17" | | AP-F17 | NAP-F17 | DP-F17 | OP-F17 |
|-----------------------|------------|---------------------------------------|------------------|---------------------------------------|---------------------------------------|
| Product (W x D x H) : | mm inch | 468.5 x 57.1 x 331 18.4 x 2.2 x 13 | | 437.5 x 51.9 x 300 17.2 x 2 x 11.8 | 465.5 x 50.6 x 328 18.3 x 2 x 12.9 |
| Net weight | | 5.2 kg / 11.4 lb | 5.2 kg / 11.4 lb | 4.3 kg / 9.5 lb | 3.4 kg / 7.5 lb |
| Packing (W x D x H) : | mm inch | 615 x 113 x 523 24.2 x 4.4 x 20.6 | | | |
| Gross weight | | 8 kg / 17.6 lb | 8 kg / 17.6 lb | 7.1 kg / 15.6 lb | 6.2 kg / 13.6 lb |

| F15" | | AP-F15 | NAP-F15 | DP-F15 | OP-F15 |
|-----------------------|------------|---------------------------------------|------------------|--|--|
| Product (W x D x H) : | mm inch | 399 x 55.1 x 254.5 15.7 x 2.2 x 10 | | 376.4 x 50.7 x 231.9 14.8 x 2 x 9.1 | 396 x 49.1 x 251.5 15.6 x 1.9 x 9.9 |
| Net weight | | 4.7 kg / 10.3 lb | 4.7 kg / 10.3 lb | 4.1 kg / 9 lb | 3.5 kg / 7.7 lb |
| Packing (W x D x H) : | mm inch | 615 x 113 x 523 24.2 x 4.4 x 20.6 | | | |
| Gross weight | | 7.3 kg / 16.1 lb | 7.3 kg / 16.1 lb | 6.7 kg / 14.7 lb | 6.1 kg / 13.4 lb |

| F13" | | AP-F13 | NAP-F13 | DP-F13 | OP-F13 |
|-----------------------|------------|--------------------------------------|-------------|--|--------------------------------------|
| Product (W x D x H) : | mm inch | 355 x 54.9 x 252.3 14 x 2.2 x 9.9 | | 332.4 x 50.2 x 231.7 13.1 x 2 x 9.1 | 355 x 50.2 x 252.3 13.9 x 2 x 9.9 |
| Net weight | | - kg / - lb | - kg / - lb | - kg / - lb | - kg / - lb |
| Packing (W x D x H) : | mm inch | 615 x 113 x 523 24.2 x 4.4 x 20.6 | | | |
| Gross weight | | - kg / - lb | - kg / - lb | - kg / - lb | - kg / - lb |

* All dimensions stated are subject to change if options are selected / integrated to base model part codes

UltraView Family

UltraView series covers a full range of professional LCD display sizes. Please select from the below the most suitable model for your application.

Sales Inquiry

inquiry@austin-hughes.com

Technical Support

support@austin-hughes.com

4K

- K55"
- K43"
- K32"
- K28"
- K23"
- K17"
- K15"
- K13"

FHD

- F55" ● F21"
- F43" ● F19"
- F32" ● F17"
- F28" ● F15"
- F23" ● F13"

WXUGA (1920 x 1200)

- X24"
- X17"

Regular

- W19" (1440 x 900)
- 20" (1600 x 1200)
- 19" (1280 x 1024)
- 17" (1280 x 1024)
- 15" (1024 x 768)
- 12" (800 x 600)
- 10" (800 x 600)

High Brightness

4K

- K55"
- K43"

Sunlight Readable Brightness

FHD

- F55" ● F21"
- F43" ● F19"
- F32" ● F17"
- F15"

Regular

- W19" (1440 x 900)
- 19" (1280 x 1024)
- 17" (1280 x 1024)

Americas

Austin Hughes Solutions Inc.
32900 Alvarado-Niles Rd, Suite 150
Union City, CA 94587
United States

inquiry@austin-hughes.com

EMEA

Austin Hughes Europe Ltd.
Unit 1, Chancery Gate Business Centre
Manor House Avenue
Southampton, SO15 0AE
United Kingdom

sales@austin-hughes.co.uk

APAC

Austin Hughes Electronics Ltd.
Unit 3608-12, Cable TV Tower
9 Hoi Shing Road, Tsuen Wan
Hong Kong

inquiry@austin-hughes.com

ASEAN

Austin Hughes Pte. Ltd.
164 Gul Circle
#01-07 JTC Space@Gul
Singapore 629621

inquiry@austin-hughes.com

Austin Hughes has an extensive distribution network, including the Americas, EMEA, APAC & ASEAN. Contact your nearest sales office for details of local representation.

Distributed by:

Distributor by country on application

Please ask for details of other products from Austin Hughes. Every effort has been made to ensure that the information contained herein is correct. There is a possibility that the image(s) shown may not be exactly the same as the final product. The company reserves the right to modify product specifications without prior notice and assumes no responsibility for any error which may appear in this publication.

All brand names, logo and registered trademarks are properties of their respective owners. Copyright 2023 Austin Hughes Electronics Ltd. All rights reserved.

CA-UV-621-FHD-S-Q123V1